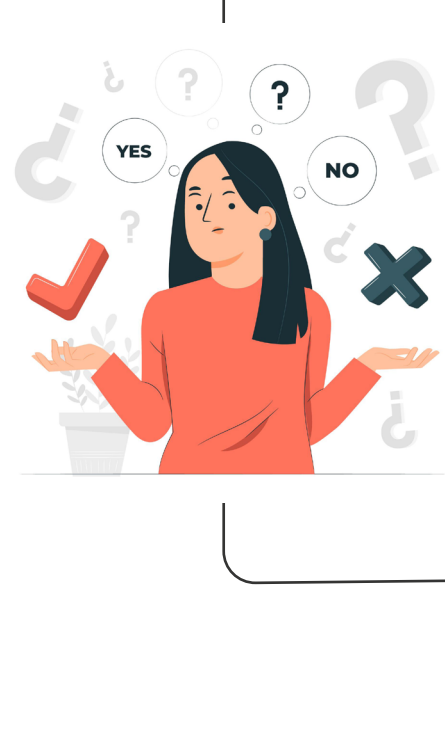




A Step by Step Guide



Welcome to Eagle Leasing's comprehensive guide! Ready to find the perfect equipment for your needs? Whether you're setting up a temporary office or looking for long term storage solution, we've got you covered. Let's make sure you pick the best fit for your project. So, sit back, and let's dive in together!

Finding what you need has never been easier!

1.

Assess Your Needs

Before diving into equipment options, consider the following:



Will the equipment be used for your business or home?

Determine if the equipment is needed for business operations or personal use.

What type of equipment do you need?

Are you looking for a place to store your goods, a mobile office, or a combination of both?

Where will you store the unit?

At your property or our Eagle Leasing storage Yard (Orange, CT; Northborough, MA; Oxford, MA)?

Please note: We do not move loaded containers.

2.

Choose Your Configuration

For Business Use:

Storage - Ground-Level:

What type of access do you need to the container?

Storage Containers

- **10' Storage Container:** Compact and secure, suitable for small storage needs and spaces.
- **20' Storage Container:** Versatile unit for various storage applications.
- **40' Storage Container:** Provides maximum storage capacity, ideal for significant storage requirements.

Double Door (Tunnel) Containers

- 20' and 40' Double Door container options available.
- Features doors on both 8' ends, allowing access from either end for greater flexibility.

Open Side (Side Access Door) Containers

Containers with full side access or equipped with doors, are perfect for easily loading large, bulky items.

- 20' size with 5', 10', 15' or full 20' door openings
- 40' size with 10', 20', 30' or full 40' door openings

Need a Customization?

We offer a range of options to tailor your storage or office containers to your specific needs.

- Roll-Up Doors: Available in 8', 10', and 12' widths, roll-up doors can be installed anywhere, on either end or along the side of the container for easy access and flexibility. Up to 4 doors per side.
- Additional Customizations: Personnel doors, ventilation, windows, partitions, and more. Check out our Customization Guide for full details.

Storage - On-Wheels (Dock Height)

Storage Trailers: Preferred by distribution centers, retailers, manufacturers, and municipalities. They can remain on-site or be transported to another location. Available in 28', 40', 45', 48', 53' lengths.

Do you require 102" wide trailers?

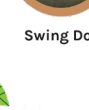
- Trailers available in 102" wide are 28', 45', 48', 53'

Do you need a roll up or swing door?

- Both types of doors are available in all of our trailers.
- Drop frame trailers are lower to the ground.

Need to bring your trailer on the road?

Ask about our Road Trailer options available in 28', 40', 45', 48', 53' lengths with swing or roll-up doors to meet your transport needs. Our Road Trailers are built for durability, safety, and compliance with road regulations, ensuring a smooth and efficient journey.



Office Containers - Ground Level:

- **10' Office Containers (Guard Shack):** A compact unit with heating, ventilation, and air conditioning (HVAC), built-in desk, filing cabinet, multiple electrical outlets, phone outlet, external GFCI outlets, steel door, and marine-grade plywood flooring.
- **20' Office Containers:** Features central HVAC, built-in desks, filing cabinets, plan table, multiple electrical outlets, phone outlet, external GFCI outlets, steel door, and marine-grade plywood flooring.
- **40' Office Containers:** Our largest office container offers extensive space with central HVAC, built-in desks, filing cabinets, plan table, multiple electrical outlets, phone outlet, and external GFCI outlets, steel doors, and marine-grade plywood flooring. Options include:
 - Breakroom (doors on both ends).
 - Open Office (two doors on one side).

Office Trailers - On Wheels:

- **20' Office Trailers:** Ideal for mid-sized projects, this trailer comes equipped with heating, air conditioning, built-in desk, filing cabinet, plan table, and multiple electrical outlets.
- **32' Office Trailers:** Versatile and spacious, suitable for various applications. Features include heating, air conditioning, built-in desk, filing cabinet, plan table, and multiple electrical outlets.
- **40' Office Trailers:** Offering maximum space, the 40' office trailer is 10 feet wide and ideal for large-scale projects or extended office needs. It includes central HVAC, built-in desks, filing cabinets, plan table, multiple electrical outlets, and external GFCI outlets.

Office/Storage Combo Units:

20' Office/Storage Combo Container (Ground Level): Offers a balanced workspace with integrated storage facilities. This unit is equipped with heating, air conditioning, a built-in-desk, filing cabinet, plan table, multiple electrical outlets, external GFCI outlets, steel doors, and marine-grade plywood flooring.

28' Office/Storage Combo Trailers (On Wheels): Combines moderate storage with comfortable office space. Features include heating, air conditioning, a built-in-desk, filing cabinet, plan table, and multiple electrical outlets.

40' Office/Storage Combo Container (Ground Level): A spacious unit that provides extensive storage and office facilities. It includes heating, air conditioning, built-in-desk, filing cabinet, plan table, multiple electrical outlets, external GFCI outlets, steel doors, and marine-grade plywood flooring.

Specialty Units:

Reefer Containers: Refrigerated units are ideal for temperature sensitive goods. remain fresh or frozen with climate settings.

- Available in: 20' x 8' x 8' 6" height
- Temperature Range: -10°F to 80°F (-23°C to 26°C)
- Features: Stainless steel interior, safety curtain



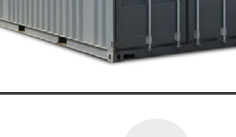
For Home Use:

Storage Containers:

How much stuff do you have?



- **10' Storage Container:** Compact and secure, this container is suitable for small storage needs. It can typically accommodate items like a few chairs, a small sofa, and several boxes, making it ideal for storing furnishings from a studio apartment or a small office.



- **20' Storage Container:** A versatile unit for various home storage applications. This larger container can hold contents such as the furnishings from a one- or two-bedroom apartment, including items like a dining set, sofas, beds, and multiple boxes.



Decide to Buy or Rent

3.

Consider the following factors:

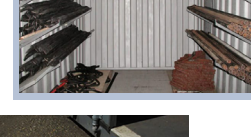
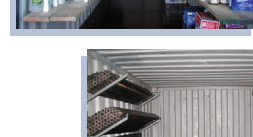
- Budget:** Evaluate your financial constraints and the cost-effectiveness of buying versus leasing. Consider whether you have the ability to utilize and move the equipment after the job is complete.
- Duration of Use:** For short-term needs, renting may be more advantageous; for long-term needs, purchasing may be more beneficial.
- Maintenance:** If the unit remains on rent, we will handle all routine maintenance, reducing the burden on your time and resources.

4. Choose Your Accessories

Ask yourself if you need any additional accessories to enhance your unit:

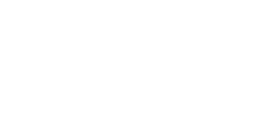
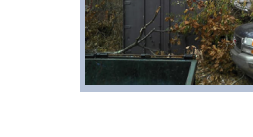
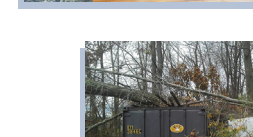
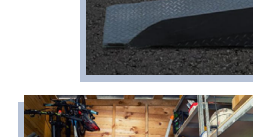
Mobile Storage Add Ons:

- **Locks:** Eagle Lock®, Kingpin Lock and Gladhand Lock ensure security and prevents unauthorized access to your unit.
- **Shelving:** Maximizes space usage, and helps you save time by keeping the contents of your container organized.
- **Pipe Racks:** Ideal for storing and organizing long items like pipes and lumber, saving you valuable time.
- **Ramps:** Hand truck and forklift ramps facilitates easy loading and unloading of heavy items.
- **Storage Trailer Stairs:** For accessing your Storage Trailer while not at a dock.
- **Contents Insurance:** Protects your valuables.
- **Damage Waiver:** Protects you from liability for damages to leased equipment.



Mobile Office Units Add Ons:

- **Skirting:** Enhances the appearance and helps in maintaining the temperature inside Office Trailers.
- **Tie Downs:** Secures the Office Trailer during adverse weather conditions.
- **Ball Hitch Lock:** Prevents unwanted movement of your trailer.
- **Shelves and Pipe Racks:** For use with Container Office/Storage Combos.
- **5G Internet:** Routers installed in our mobile office units, essential for connectivity and remote work capabilities.
- **Generator:** Provides power backup for uninterrupted operation.
- **Contents insurance:** Protects your valuables.
- **Damage Waiver:** Protects you from liability for damages to equipment.



5.

Ready to move forward or need more help?

[Start A Quote](#)

Contact Eagle Leasing for personalized assistance and flexible rental terms tailored to your project requirements. Visit our website or reach out to our customer support team today!

